



# What You Get

## From YourCast

### Contact Us

---

✉ [jaimee@getyourcast.com](mailto:jaimee@getyourcast.com)

☎ +225.308.1281

🌐 [www.getyourcast.com](http://www.getyourcast.com)

### With Each Purchase

---

- Free Consultation
- Custom Written Forecast
- Personalized Video Report
- Direct Communication with Jaimee and Josh

### About Us

---

#### **Jaimee Eachus | Co-Founder and CEO**

For more than a decade, Jaimee has honed her craft of becoming a master molder of the client experience. Her educational background in marketing, business and management uniquely qualify her to service our customers.

#### **Dr. Josh Eachus | Co-Founder and Chief Meteorologist**

Josh has over 15 years of forecasting under his belt. His doctoral research and specialty are in providing people useful context to weather and climate information.

#### **Doug Eachus | Director of Human Resources 🐾**

He provides lots of barks when Josh and Jaimee get out of line and typically only needs a bone or two for a waggy tail and restored employee morale.

#### **Cash Eachus | Director of Finance 🐾**

He is new to the company, but brings a modern flare and enthusiasm. Accounts are strictly monitored to make sure no "goods" are missed.

## Table of Contents

---

Page 2:	Driving & Road Trip Planner
Page 5:	Vacation Planner
Page 8:	Event Planner
Page 11:	Insurance Claim Information
Page 14:	Long Term & Seasonal Outlook
Page 17:	Personal Meteorologist



# **DRIVING & ROAD TRIP PLANNER**



# JANE'S ROAD TRIP

## Shreveport, LA → Baton Rouge, LA

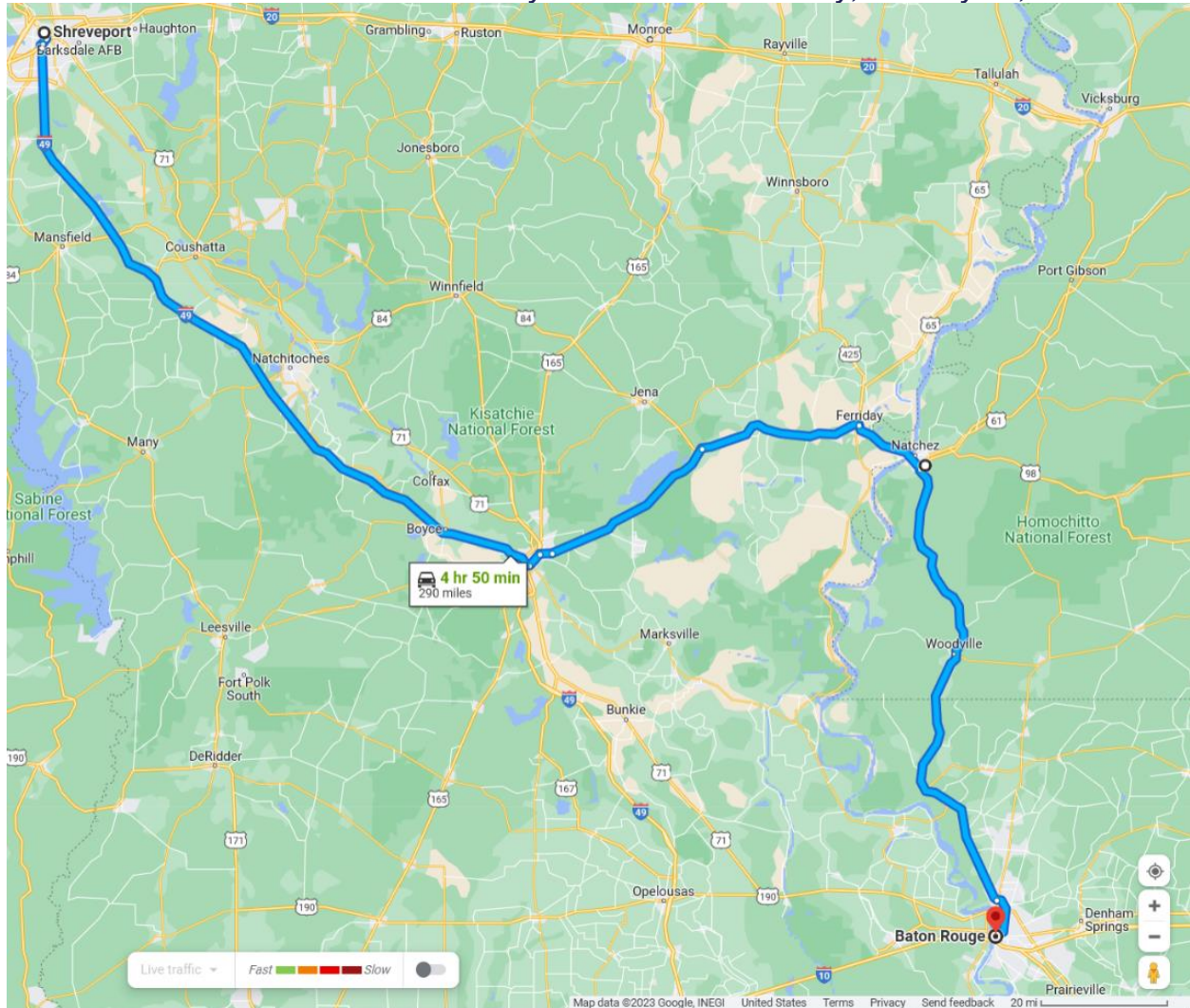
YourCast was asked to identify the safest (weather) route for a drive between Shreveport, LA and Baton Rouge, LA on Tuesday, January 24, 2023.

**YourCast: use I-49 South, LA-28 East & US-61 South between 6am – 1pm.**

**SAFEST ROUTE: 4 hours & 50 minutes**

**FASTEST ROUTE: 3 hours & 45 minutes**

*\*For Fastest Route it is advised to delay drive until Wednesday, January 25, 2023*



**Follow This Link to send Complete Google Maps Route to Your Mobile Device:**  
<https://goo.gl/maps/9M3mKLYYL7Kcmvfg8>



# JANE'S ROAD TRIP

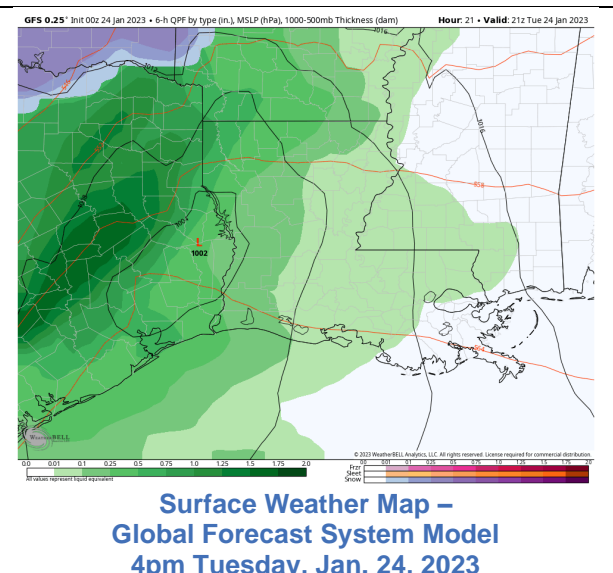
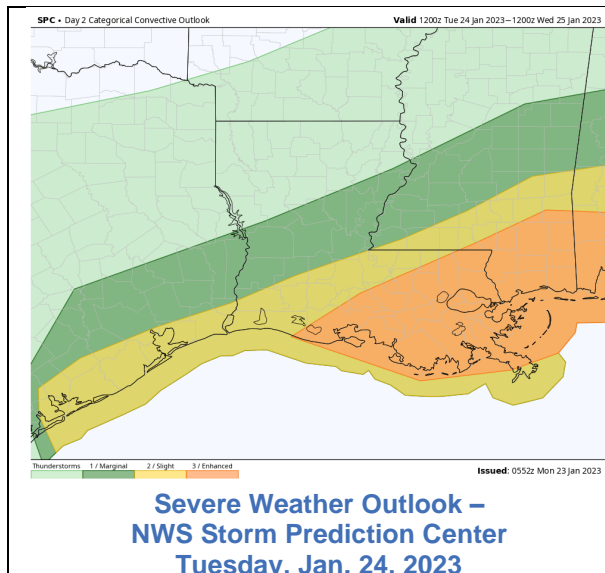
## Shreveport, LA → Baton Rouge, LA

### Summary

There is a possibility of severe weather along the I-10 corridor between Houston, TX and Mobile AL on January 24, 2023. Thunderstorms will be capable of producing damaging wind gusts, tornadoes and heavy rain. A widespread area of rain is also expected. Winds will be out of the southeast at 20-30mph. All of these conditions are hazardous to driving and should be avoided. If delaying travel is not possible, the drive should be completed by 1pm to avoid the threat for severe weather, rain and strong winds in the arrival location of Baton Rouge, LA. Use I-49 South, LA-28 East & US-61 to bypass the most hazardous weather in the recommended time frame.

### Terms to Know

Severe Weather: a severe thunderstorm is one that is capable of producing wind gusts in excess of 60mph, hail greater than 1" in diameter or a tornado. Both rainfall (intensity) and lightning ARE NOT considered when determining severe weather.



### Forecast

Pockets of rain can be expected when departing Shreveport, LA on the morning of Tuesday, January 24. Though generally light, intermittent areas of moderate rain will be possible as the drive continues south through Louisiana. In addition to rain, by late morning, winds will begin to increase across central Louisiana and Mississippi. Especially in high profile vehicles and on elevated roads such as bridges, wind may make controlling the vehicle more difficult and extra caution should be taken. The final stretch of the drive south into Baton Rouge, LA by early afternoon will continue the possibility of rain with increasing winds. After 1pm, winds will increase further with a potentially severe squall line of rain and thunderstorms expected during the late afternoon hours.

Report Prepared By:

*Joshua D. Eachus*  
YourCast | Chief Meteorologist

January 22, 2023



# **VACATION PLANNER**



# JOE'S BACHELOR PARTY

## Western U.S. Golf Trip

*YourCast was asked to compare locations that are options for a golf themed bachelor party in the Western U.S. during the summer of 2022.*

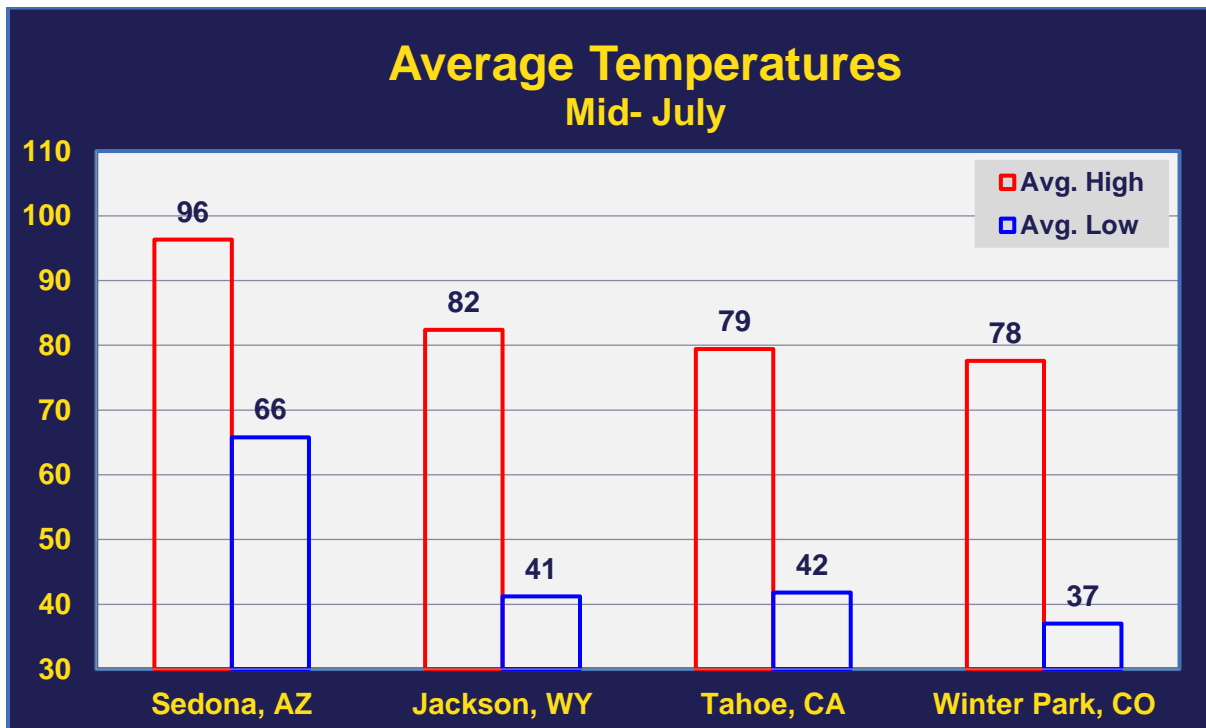
**YourCast is Tahoe, CA.** North America's largest mountain lake is positioned between the Sierra Nevada Range to the west and the Carson Range to the east. In July, Tahoe offers the lowest combination of risk from precipitation and heat. The less than 6 percent daily chance of rain is extraordinarily low for anywhere in the country, along with the minimal chance of dealing with a very hot (high over 90°) or very cool (high under 60°) day. Since the main risks to an outdoor trip in the mountain west are the threats for rain and uncomfortable temperatures such as oppressive heat, Tahoe is the most suitable option. The following report compares results with Sedona, AZ, Jackson, WY, and Winter Park, CO.

### Terms to Know

Chance of Rain: the probability that any amount of rain will be measured within a 24-hour period (one day). This does not provide detail about how much time of a given day it will actively rain, or how much will fall.

### Temperatures

Mountainous areas in the west are comfortably warm during the summer season. Jackson, Tahoe and Winter Park all have average highs a few degrees on either side of 80 degrees and low average humidity in July.



If you visit Sedona, odds are you will be experiencing afternoon high temperatures over 90 degrees. Given the time of year, none of these locations pose a real chance of chilly highs under 60 degrees.





# JOE'S BACHELOR PARTY

## Western U.S. Golf Trip

High Temperature Chances		
Location	Chance High Below 60°	Chance High Over 90°
Sedona, AZ	0%	83%
Jackson, WY	0%	8%
Tahoe, CA	0.2%	0.9%
Winter Park, CO	0%	0%

### Precipitation

Climatological data suggest at least one day of a four day trip could see rain in Sedona or Winter Park. There is a chance the entire time could remain dry in Jackson and that is a likelihood in Tahoe. In the Mountain West, precipitation in July typically comes from pop-up, afternoon thunderstorms. On the other hand, Sedona can experience long duration summer monsoons that can wash out entire days—and they are most common during the month of July.

Rain & Humidity		
Location	Chance of Rain	Humidity
Sedona, AZ	25%	Low
Jackson, WY	18%	Low
Tahoe, CA	5%	Low
Winter Park, CO	25%	Low

### Comfort

It is important to understand, especially if you are not native to the region, that air in the Western U.S. can be very dry. As a result, while the afternoons can feel comfortably warm, the nights can just as easily feel chilly. Know that dry air can quickly dehydrate people, so consuming lots of fluids and keeping moisturizer on hand will maximize your comfort!

Possible Items to Pack			
Location	Clothing	Accessories	Other
Sedona, AZ	Light and Loose! Shorts, T-shirts, Flip-flops or Sneakers	Hat, Sunglasses, Water Bottle	Sunscreen, Moisturizer, chap-stick
Jackson, WY Tahoe, CA Winter Park, CO	Shorts, T-shirts, Long Sleeves, Jeans, Light Jacket, Sneakers	Hat, Sunglasses Water Bottle	Sunscreen, Moisturizer, chap-stick

### Other Considerations

For mountainous locations in the Western United States, the weather commonly supports wildfires during the summer season. Wildfires spark easily due to hot, dry and windy conditions. It is unpredictable as to where these disasters will occur, so be sure to check in with YourCast or the National Weather Service prior to the trip to see if and where any fire activity is present. Know your evacuation plan before the trip in case a fire develops.

Report Prepared By:

*Joshua D. Eachus*  
YourCast | Chief Meteorologist

January 22, 2023



# **EVENT PLANNER**





# CHRISTINA'S WEDDING

## Smith, Texas

YourCast was asked to compare dates that are options for a wedding in Texas in early 2023.

**YourCast is January 14.** It is the most likely date to have cooperative weather for a wedding. Differences in rain chances are not significant on any of the four dates. While January does pose about a 33% chance of having temperatures below 60 degrees, this is outweighed by it being half as likely as March to have a risk for severe weather—the most significant threat to an outdoor event.

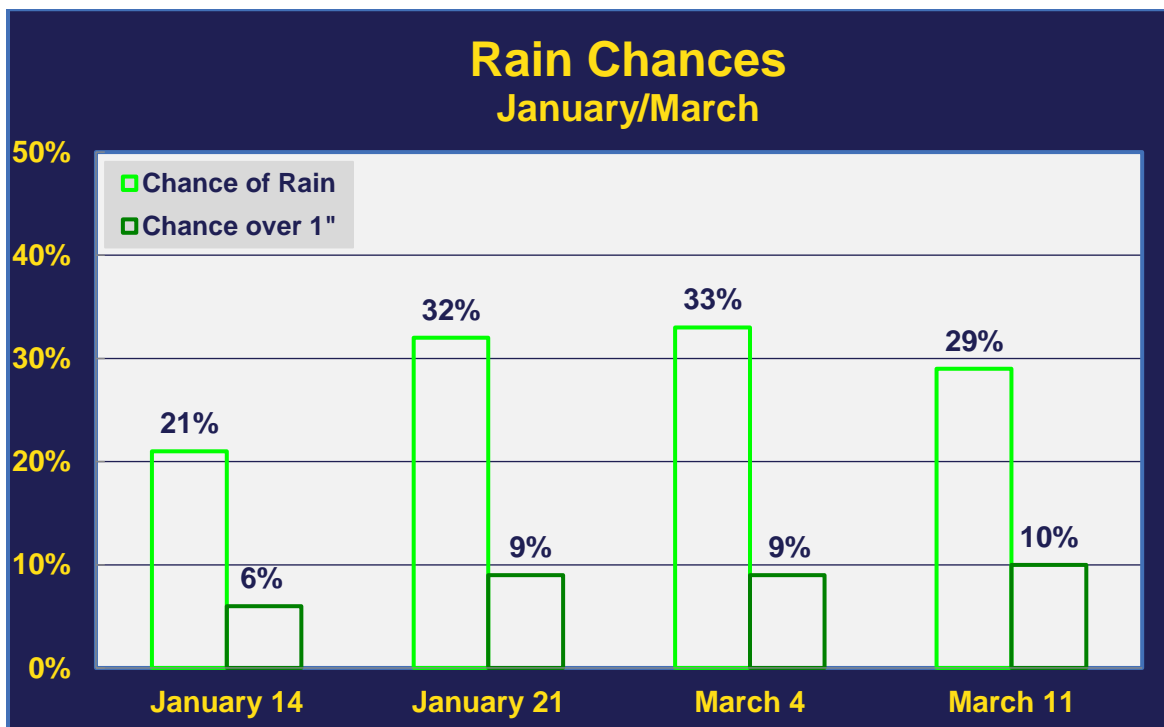
### Rain Chances

One of the wettest cities in the country, long dry periods should not be expected in Smith. January averages 9 days with measurable rain and 3.13 inches of total rain. March averages 11 with 4.13 inches. While the two months are similar, odds for a dry day are a bit better in January versus March.

### Terms to Know

Measurable Rain: the chance for any amount of rain to fall within a 24-hour period (one day). This does not provide detail about how much of time of a given day it was actively raining, or how much fell.

Severe Weather: Classified as tornadoes, winds over 58mph or hail larger than 1" in diameter. The National Weather Service issues "outlooks" that scale risks from 1 (lowest) to 5 (highest). Even on a "1" outlook, the ingredients for severe weather are much higher than usual.



Date	Average # of Rainy Days	Average Monthly Rain
January	9	3.13"
March	11	4.13"



# CHRISTINA'S WEDDING

## Smith, Texas

### Other Considerations

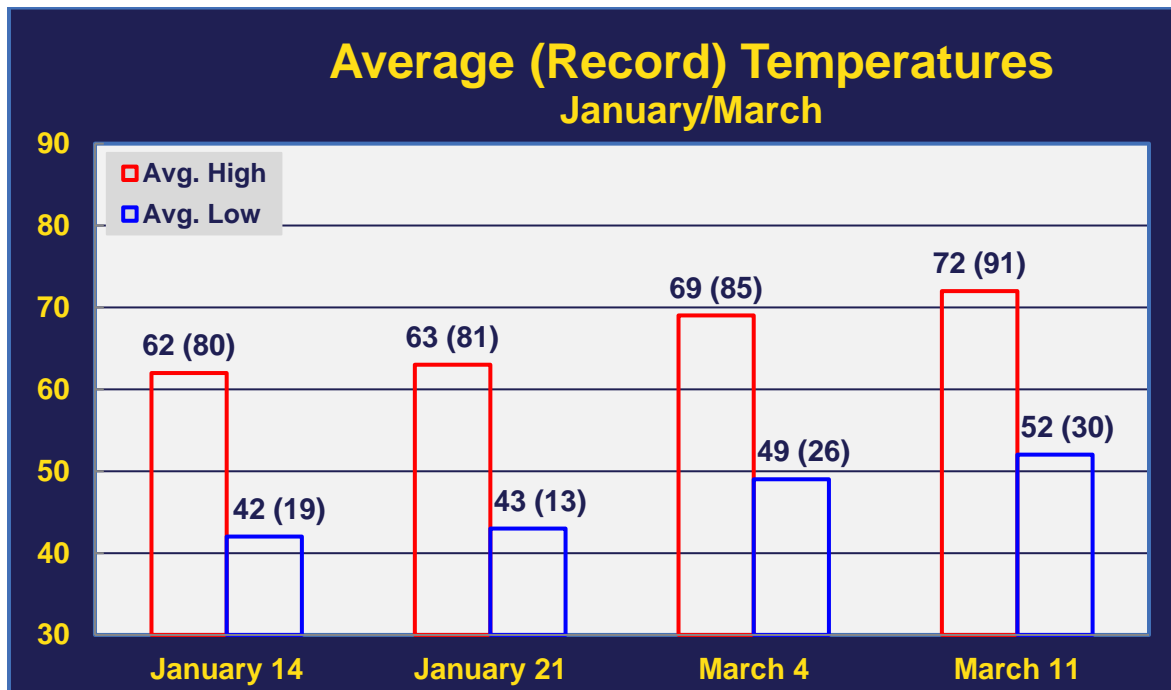
Wintry weather is rare in Smith with snow or ice events all occurring in November (1), December (3), January (10) and February (10). Tropical systems are not a threat in January or March, but severe weather is a legitimate concern. Since 1987, there has been a risk for severe weather (levels 1 – 5), 256 times in January and March. The risk for severe weather is nearly double in March compared to January.

Month	Threats Since 1987	Avg. Daily Chance
January	88	8%
March	168	16%

### Average and Record Temperatures

Smith typically has mild, damp winters. Spells of cold air do happen but are infrequent. January is the coldest month with record lows in the teens on 14<sup>th</sup> and 21<sup>st</sup> but average highs and lows are in the 60s and 40s. Those two dates have about a 65% chance of going above 60 degrees. Almost any day of the year could reach 80 degrees, but those chances are below 2% in January. 90 degrees is a possibility beyond March 5<sup>th</sup>. Freezing temperatures are unlikely past February 22<sup>nd</sup>.

Date	% High Under 60°	% High Over 80°
January 14	34%	2%
January 21	33%	2%
March 4	17%	12%
March 11	8%	13%



Report Prepared By:

*Joshua D. Eachus*  
YourCast | Chief Meteorologist

August 19, 2021



# **INSURANCE CLAIM INFORMATION**



# RICHARD'S TREE DAMAGE

## Baton Rouge, Louisiana

*YourCast was asked to identify wind conditions in the Baton Rouge Area around the dates of March 23 and May 23 in 2022. Two dates were interrogated to corroborate tree damages sustained in the Spring of 2022. Interestingly, both dates had active weather ONE DAY PRIOR to the incident and date/s in question.*

### March 23

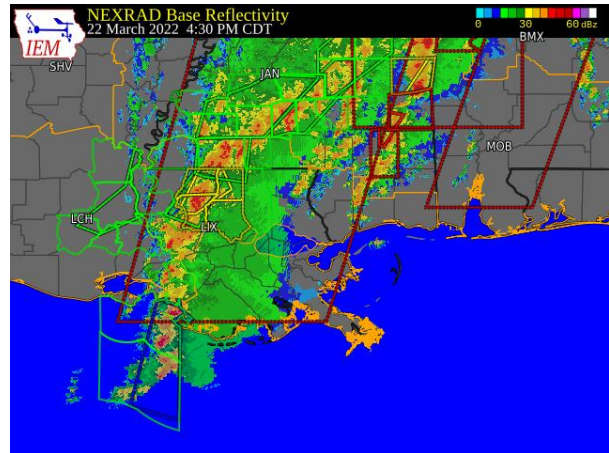
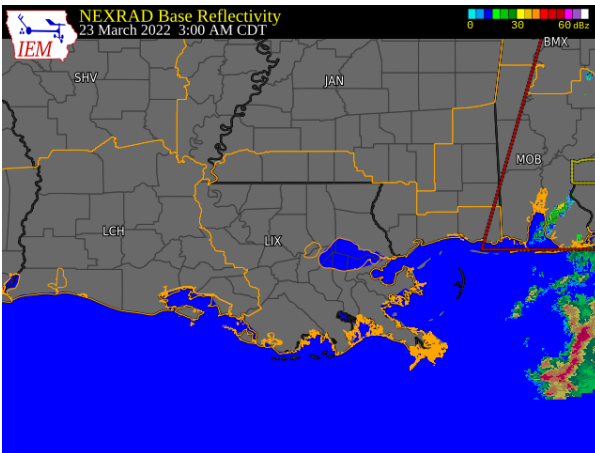
There were no weather warnings issued. Radar was very quiet during the overnight hours. An analysis of the wind data shows a sustained wind of 6mph at 3am. In the previous 24 hours, there had been a maximum sustained wind of 31mph at 3:40pm on March 22 with a maximum wind gust of 41mph at 3:30pm on March 22.

On the previous day, there had been a severe thunderstorm warning for East Baton Rouge Parish which indicates the possibility of 60mph+ winds. This was the day of a notable tornado in Arabi—St. Bernard and Orleans Parishes. There was also a flash flood warning which indicates several inches of rain fell in a short time. On the previous day, 1.06 inches of rain fell.

### Terms to Know

Wind Speed: The rate at which air is moving horizontally past a given point. It may be a 2-minute average speed (reported as wind speed) or an instantaneous speed (reported as a peak wind speed, wind gust, or squall).

Wind Gust: Rapid fluctuations in the wind speed with a variation of 15mph or more between peaks and lulls. The speed of the gust will be the maximum instantaneous wind speed.



Baton Rouge Metropolitan Airport	
Sustained Wind	Wind Gust
31mph (3/22, 3:40pm)	41mph (3/22, 3:30pm)
31mph (3/22, 1:05pm)	41mph (3/22, 3:36pm)
29mph (3/22, 11:53am)	39mph (3/22, 3:40pm)
28mph (3/22, 2:55pm)	39mph (3/22, 3:51pm)
6mph (3/23, 3:00am)	0mph (3/23, 3:00am)

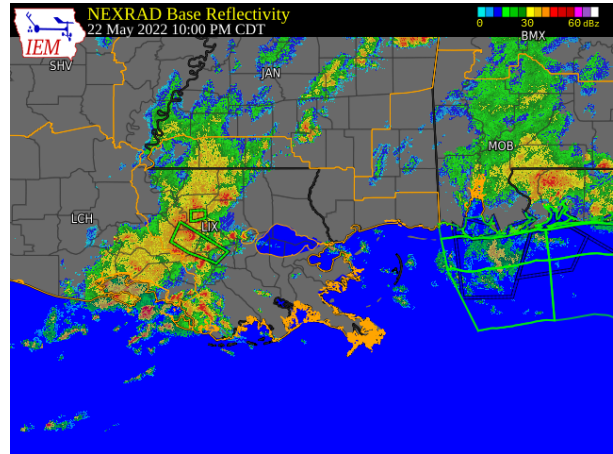
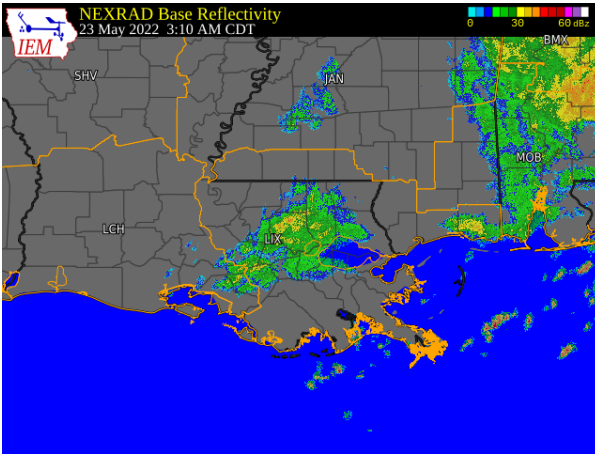


# RICHARD'S TREE DAMAGE

## Baton Rouge, Louisiana

### May 23

There were no weather warnings issued. Radar showed some lingering showers—the remnants of a stronger line of showers and thunderstorms—at 3am. An analysis of the wind data shows a sustained wind of 6mph at 3am. In the previous 24 hours, there had been a maximum sustained wind of 18mph at 8:40pm on May 22 with a maximum wind gust of 24mph at 8:39pm on May 22.



On the previous day, May 22, there had been a line of thunderstorms that moved through East Baton Rouge Parish. There was a flash flood warning, which indicates several inches of rain fell in a short time. Between the two days, a total of 1.64 inches of rain fell.

Baton Rouge Metropolitan Airport	
Sustained Wind	Wind Gust
18mph (5/22, 8:40pm)	24mph (5/22, 8:39pm)
16mph (5/22, 8:30pm)	22mph (5/22, 8:15pm)
16mph (5/22, 8:35pm)	17mph (5/22, 8:23pm)
16mph (5/22, 8:39pm)	-----
6mph (5/23, 3:00am)	0mph (5/23, 3:00am)

### Guidance

While the winds may not have been precisely strong enough to fall a tree at 3am, the cumulative effect of heavy rain (both previous days had flash flood warnings) and earlier gusty winds may have played a role. This would ultimately be determined by the health of the tree (by an arborist) at that time and the soil conditions. Everyone is encouraged to report suspected weather damages to the Media/National Weather Service (NWS) because it is then officially filed, often providing the proof needed for insurance claims.

*Storm Reports for both dates and Raw Wind Data from Baton Rouge Metropolitan Airport have been provided as appendices to this report.*

Report Prepared By:

*Joshua D. Eachus*  
YourCast | Chief Meteorologist

January 21, 2022



**LONG TERM  
&  
SEASONAL  
OUTLOOK**



# Kirkland – Macini Wedding Philadelphia, Pennsylvania

*YourCast was asked to provide a long term weather outlook for October 2022 in Philadelphia, Pennsylvania.*

## **YourCast is for below average temperatures and near average**

**precipitation.** The average high for the month should be between 61.5 – 66.3 degrees and the average low should be between 45.3 – 50.5 degrees. Rain should fall on 10 – 14 days.

### **Summary**

October is a month of transitioning weather in Philadelphia. Storm systems with cold fronts are frequent in the middle of the fall season. While this does bring a threat for times of rain, typically more than 70 percent of the month is dry. October 23, specifically, has a lower chance of rain than most days of the year.

With August and September, October is one of the driest months. The threat for severe weather is lower than the summer season, but the daily chance is above zero. The remnants of tropical systems can occasionally bring heavy rain events to the region during this time of year with a historical chance of about 4 percent or once every 20 years. Both the average high and low temperatures drop more than ten degrees from the beginning of the month to the end of the month. The high and low temperature bounds for October 23 are 87 degrees and 31 degrees respectively.

### **Terms to Know**

Analog Forecast: a method of long-range weather forecasting based on previous years with similar global and local weather patterns and events. There is rarely a perfect fit from the past for future weather.

### **October 23 Climate Statistics (based on 30-Year Averages)**

<b>Avg. / Rec. High</b>	<b>Avg. / Rec. Low</b>	<b>% &gt;55°</b>	<b>Daily Rain % vs. Avg. Annual</b>
<b>64.8° / 87°</b>	<b>47.6° / 31°</b>	<b>90%</b>	<b>26.7% / 32.1%</b>

### **Outlook**

To build this analog forecast, we found the global and local patterns for Philadelphia, Pennsylvania leading up to October 2022. The global pattern is the end of a two-year La Niña transitioning into El Niño. Since 1950, 4 years have had a similar global pattern—1972, 1976, 2012, and 2018. Since La Niña and El Niño are key drivers of weather, these four years serve as possible examples of what can be expected in the months ahead. The local pattern is a recent fall with average precipitation and above average temperatures followed by a winter (through Jan. 10) with below average precipitation and above average temperatures. Parts, but not all, of the four analog years matched with the recent local pattern.

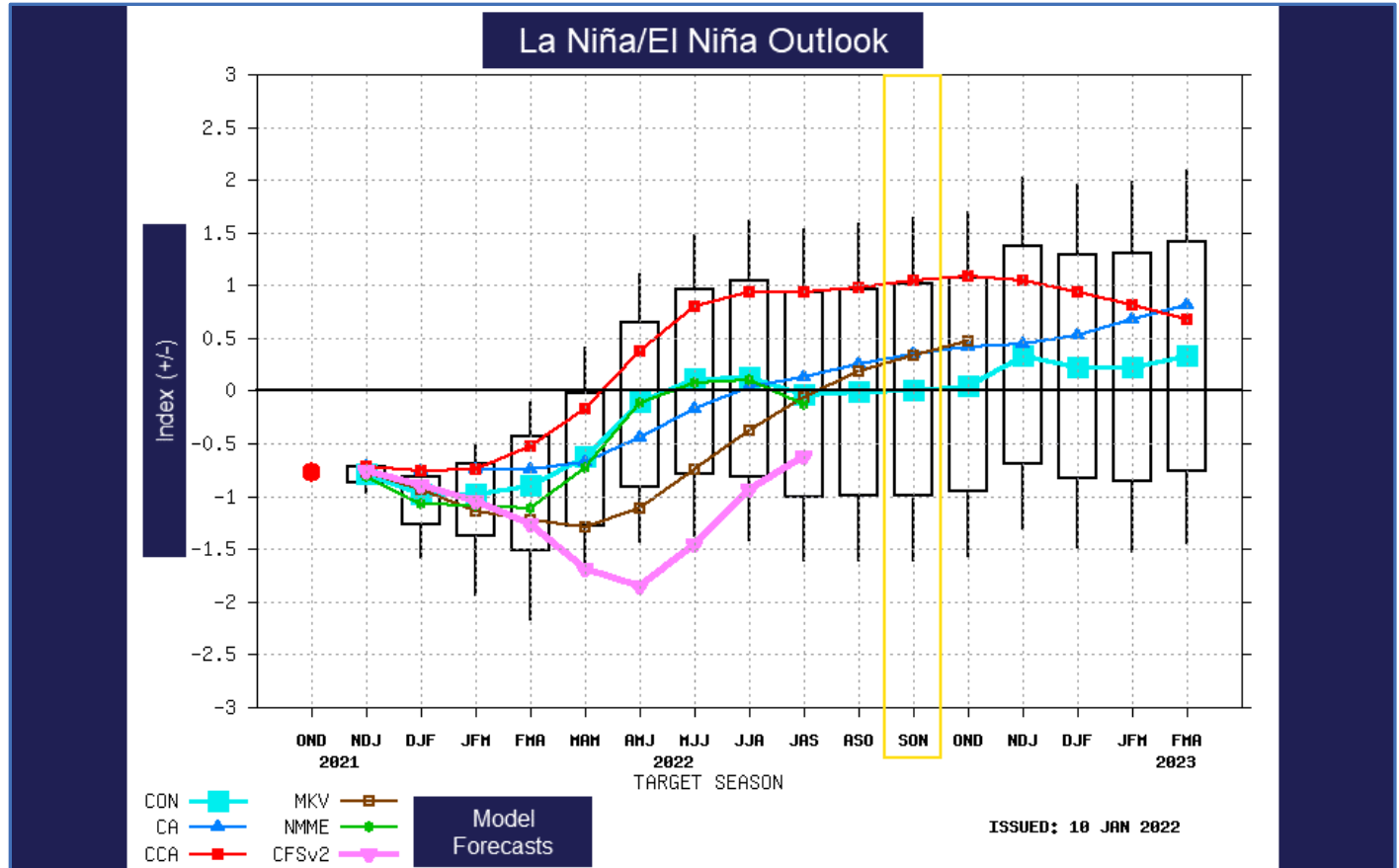
### **Analog for October 2022**

<b>Year</b>	<b>Avg. High</b>	<b>Avg. Low</b>	<b>Precip.</b>	<b>Rain Days</b>	<b>Days &gt; 55°</b>
<b>1972</b>	<b>61.8°</b>	<b>43.5°</b>	<b>3.77"</b>	<b>8</b>	<b>25</b>
<b>1976</b>	<b>60.8°</b>	<b>44.2°</b>	<b>4.30"</b>	<b>13</b>	<b>24</b>
<b>2012</b>	<b>66.8°</b>	<b>52.0°</b>	<b>4.08"</b>	<b>10</b>	<b>28</b>
<b>2018</b>	<b>66.0°</b>	<b>51.8°</b>	<b>3.08"</b>	<b>12</b>	<b>26</b>





# Kirkland – Macini Wedding Philadelphia, Pennsylvania



Graph - La Niña (negative values)/El Niño (positive values) model forecasts, via NOAA CPC  
colored lines: computer model forecasts  
black boxes: average margin of forecast error

In the 4 years chosen as analogs for October 2022, the average high was around 63.4 degrees and the average low around 47.9 degrees with about 11 rainy days resulting in 3.81 inches. High temperatures were above 55 degrees 77 percent of the time in these four years.

Report Prepared By:

*Joshua D. Eachus*  
YourCast | Chief Meteorologist

February 14, 2022



**PERSONAL  
METEOROLOGIST**



# Kirkland – Macini Wedding

## Philadelphia, Pennsylvania

YourCast was asked to provide a detailed forecast for wedding day events in Philadelphia, Pennsylvania on October 23, 2022. The following is based on the best information available as of October 20, 2022 at 8pm EDT.

### Summary

A storm system will move north along the East Coast of the United States late Saturday into Sunday. A few showers will be possible in Philadelphia.

Time	Rain Chance	Rain Rate	Sky Cover	Temperature	Wind
7am	10%		Mostly Cloudy	55°	N.E. 5-10mph
8am	10%		Mostly Cloudy	55°	N.E. 5-10mph
9am	10%		Mostly Cloudy	56°	N.E. 5-10mph
10am	20%	Light	Mostly Cloudy	57°	N.E. 5-10mph
11am	20%	Light	Mostly Cloudy	58°	N.E. 5-10mph
12pm	20%	Light	Mostly Cloudy	59°	N.E. 5-10mph
1pm	30%	Light	Mostly Cloudy	60°	N.E. 5-10mph
2pm	30%	Light	Mostly Cloudy	60°	N.E. 5-10mph
3pm	40%	Light	Mostly Cloudy	61°	N.E. 5-10mph
4pm	40%	Light	Mostly Cloudy	61°	N.E. 5-10mph
5pm	40%	Light	Mostly Cloudy	61°	N.E. 5-10mph
6pm	40%	Light	Mostly Cloudy	60°	N.E. 5-10mph
7pm	30%	Light	Mostly Cloudy	59°	N.E. 5-10mph
8pm	30%	Light	Mostly Cloudy	58°	N.E. 5-10mph
9pm	20%	Light	Mostly Cloudy	58°	N.E. 5-10mph
10pm	20%	Light	Mostly Cloudy	58°	N.E. 5-10mph
11pm	10%		Partly Cloudy	58°	N.E. 5-10mph

### Precipitation

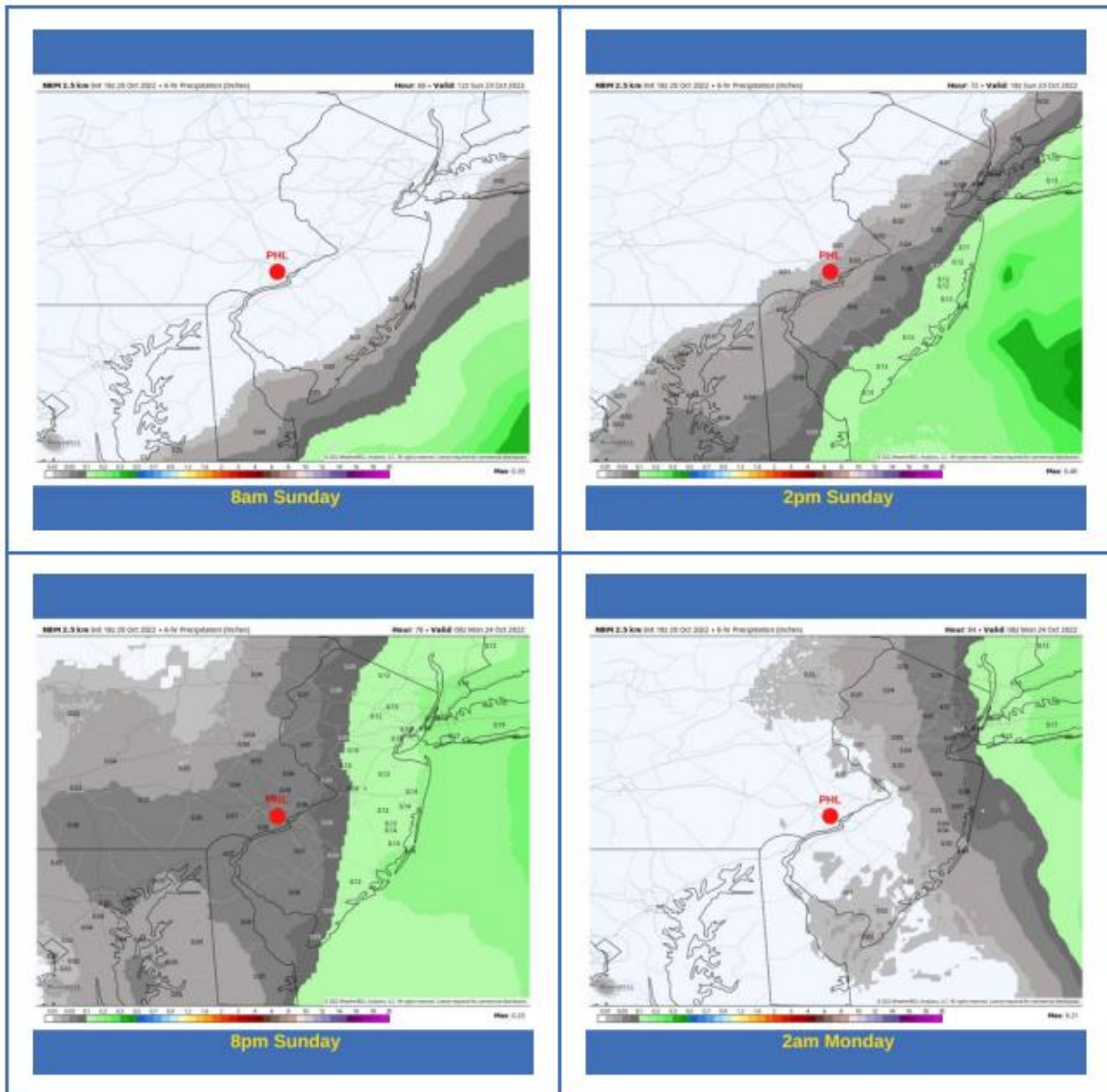
A surface low-pressure system will move from east of the North Carolina coast on Saturday night to east of the New Jersey coast by Sunday night. Clouds will increase Saturday night and by dawn on Sunday, some light rain will spread across Delaware and New Jersey. This light rain will try to move inland as far west as about I-95 in eastern Pennsylvania. In Philadelphia, rain will not be constant and rainfall rates will be light. The highest chance for rain will be from 1pm - 8pm. Rainfall amounts will be less than a quarter of an inch. Lightning is not expected.

### Guidance

It would be advisable to have an umbrella or another type of rain protection available, just in case. Since it is unlikely that it will be actively raining during the entire day, there should be dry time available for outdoor activities. An umbrella or rain jacket check may be necessary at venues.



# Kirkland – Macini Wedding Philadelphia, Pennsylvania



6-hour rain totals from 8am Sunday – 2am Monday where each image displays possible rainfall total in the preceding 6 hours. Shades of gray represent rain totals less than one-tenth of an inch and are often correlated with times of drizzle or sprinkles. Shades of light green represent rain totals around one to two tenths of an inch and are correlated with times of light rain.

## Other Considerations

Aside from rain, mostly cloudy skies, northeast winds of 5-10mph and temperatures in the upper 50s to low 60s and relative humidity between 70-90 percent will cause a damp, cool feeling through the day. A light, breathable outer layer will provide the most comfort when outside.

Report Prepared By:

*Joshua D. Eachus*  
YourCast | Chief Meteorologist

October 20, 2022